



# **Theme Manager 2.0**

## **Installation Handbook**

## TABLE OF CONTENTS

<b>CHAPTER 1 : INTRODUCTION</b> .....	<b>3</b>
1.1 ABOUT THIS HANDBOOK .....	3
1.2 ABOUT THE THEME MANAGER.....	3
1.3 GUARANTEE AND LIABILITY LIMITATION.....	3
1.4 REGISTERED TRADEMARKS .....	3
<b>CHAPTER 2 : PREREQUISITES</b> .....	<b>4</b>
<b>CHAPTER 3 : INSTALLATION PROCEDURE</b> .....	<b>5</b>

---

## CHAPTER 1 : INTRODUCTION

### 1.1 About this handbook

This installation handbook is made of three chapters:

<b>Chapter 1</b>	<b>Introduction</b>
<b>Chapter 2</b>	<b>Prerequisites</b>
<b>Chapter 3</b>	<b>Installation procedure</b>

The information contained in this handbook can be subject to change without notice by STAR INFORMATIC S.A.

No part of this document may neither be reproduced nor transmitted for any purpose or by any means whatsoever, electronic or mechanic, without the formal and written permission of STAR INFORMATIC S.A.

©2001 STAR INFORMATIC S.A. All rights reserved.

### 1.2 About the theme manager

**Theme Manager, STAR CAD** and **STAR GIS** are registered trademarks of STAR INFORMATIC S.A.

**Theme Manager, STAR CAD** and **STAR GIS** have been developed by STAR INFORMATIC S.A.

**Theme Manager, STAR CAD** and **STAR GIS** are the exclusive property of STAR INFORMATIC S.A.

### 1.3 Guarantee and liability limitation

STAR INFORMATIC S.A. has carried out all the necessary and preliminary tests on its software and has checked the compliance of this guide. STAR INFORMATIC S.A. offers no guarantee, formal or tacit, on **Theme Manager** software product, its qualities, efficiency or capacity to satisfy any application whatsoever.

Consequently, the software and its handbook are sold as they are and the buyer assumes full risk as regards their effectiveness and use. STAR INFORMATIC S.A. can, under no circumstances, be held responsible for any damage, direct or indirect, resulting from a defect in the software or inaccuracy in the handbook, or from any processing errors on the part of the user.

STAR INFORMATIC S.A. reserves the right to modify the content of the software and its operating guide without notice.

### 1.4 Registered trademarks

Windows 3.11, Windows 95, Windows 98, Windows NT and Access© are registered trademarks of Microsoft Corporation.

Printed in May 2001 in Belgium.

---

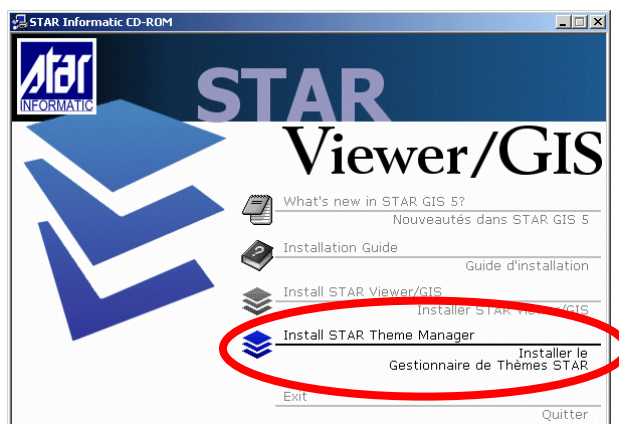
## CHAPTER 2 : PREREQUISITES

When you install Theme Manager, make sure that you have the « ADMINISTRATOR » access rights on the workstation because system files might need to be updated.

The system drive, the temporary files and the target directory must have enough space available.

## CHAPTER 3 : INSTALLATION PROCEDURE

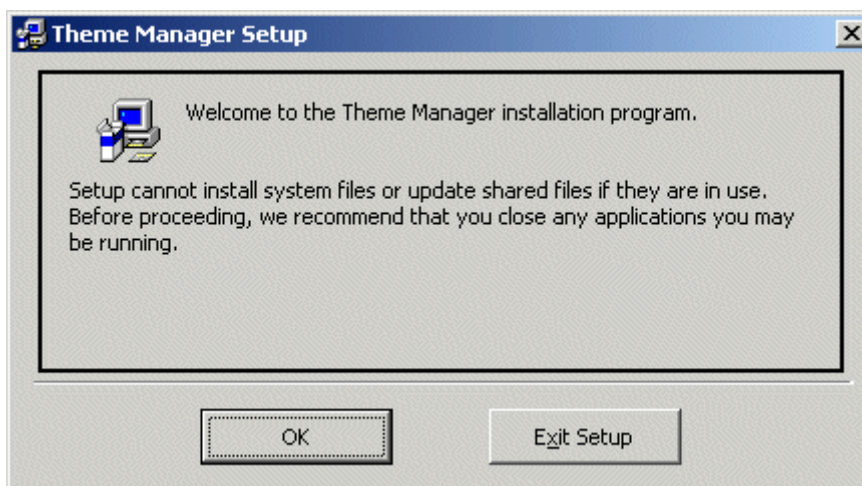
To install the theme manager, use STAR GIS (V5.1) CD-ROM and select the corresponding line in the home page



After having started the setup program, the system copies the files that it will need. Meanwhile, another window appears.

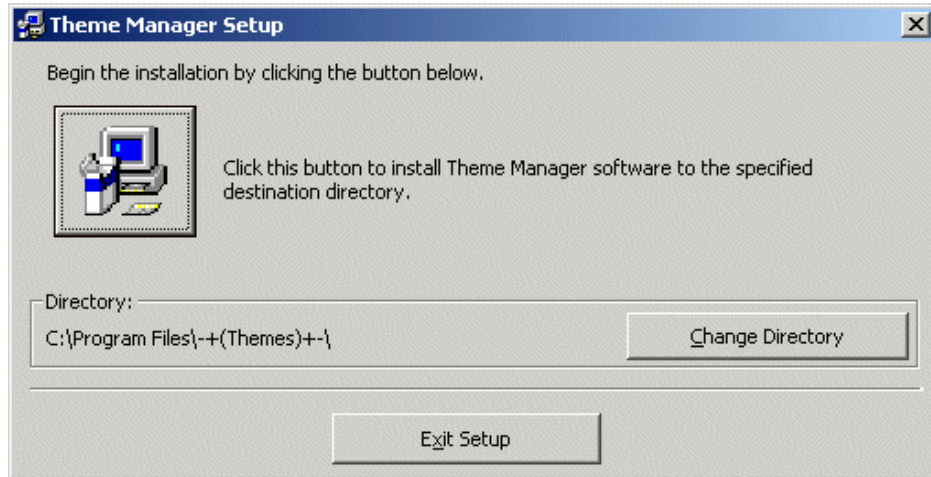
Copying Files, please stand by.

After having copied the files required for setup, the program asks you to close all applications other than the installation one in order to update system files if necessary.



When you have checked that the setup program is the only one that runs on the computer, you may go on with the procedure. Simply click OK.

A new dialog box appears and you may choose the directory in which the application is to be setup. Simply click «Change Directory».

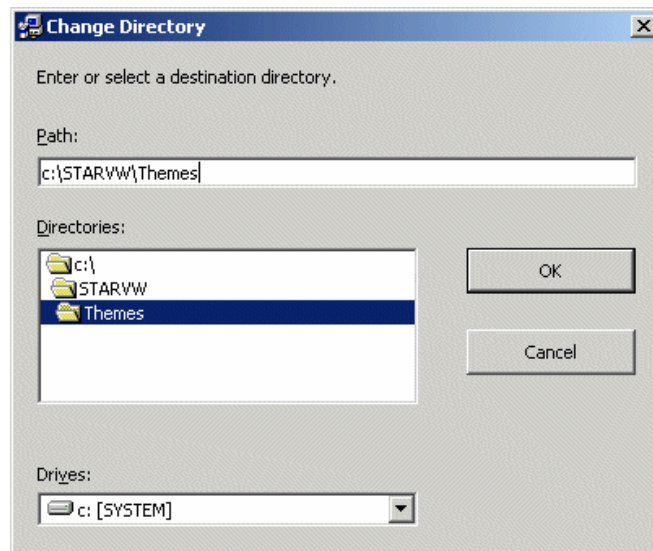


If you have clicked «Change Directory», a new dialog box appears. It enables you to define the access path to the directory in which you want to place the application executable.

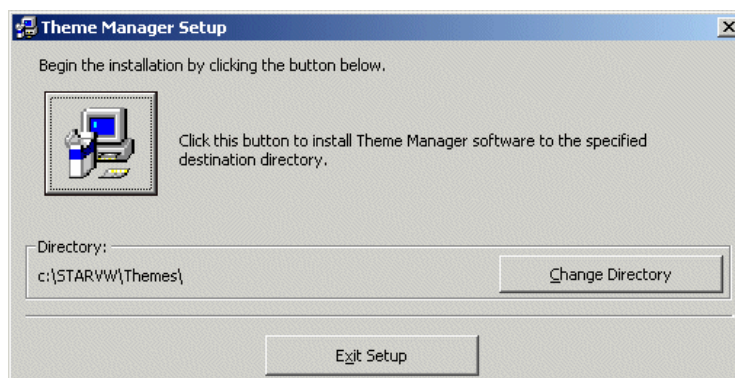
For instance, you can choose a sub-directory of the graphic application that is used:

C:\Starvw\Themes

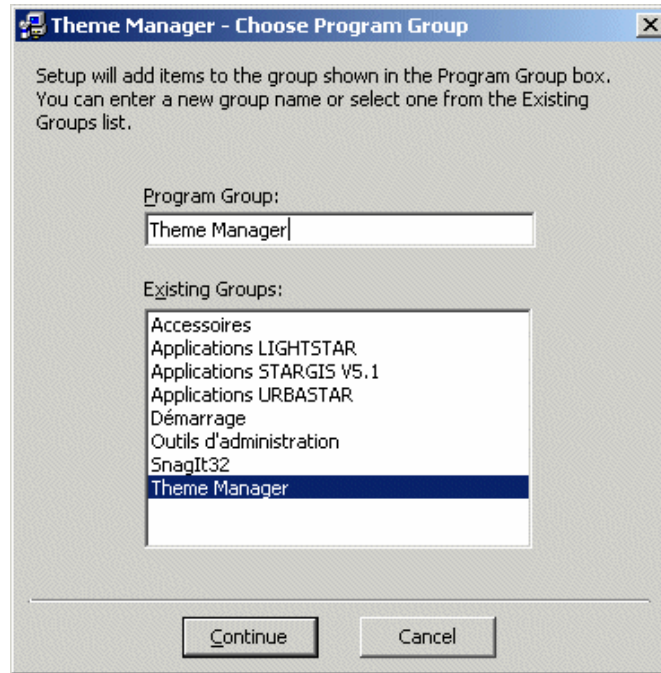
Or any other directory that will be easy to find afterwards.



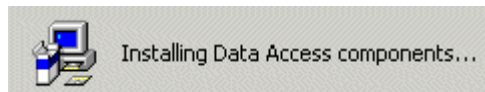
The setup program confirms the access path where the application executable will be setup.



A last dialog box appears. It lets you specify the name of the group used to access the application from Start menu.



After having defined the group in which the access shortcut to the Theme Manager application is to be located, the setup program starts the “real” installation.



When setup is done, you need to configure the « INI » files and shortcuts that will enable you to use the application in a specific environment (cf. User's Guide).